



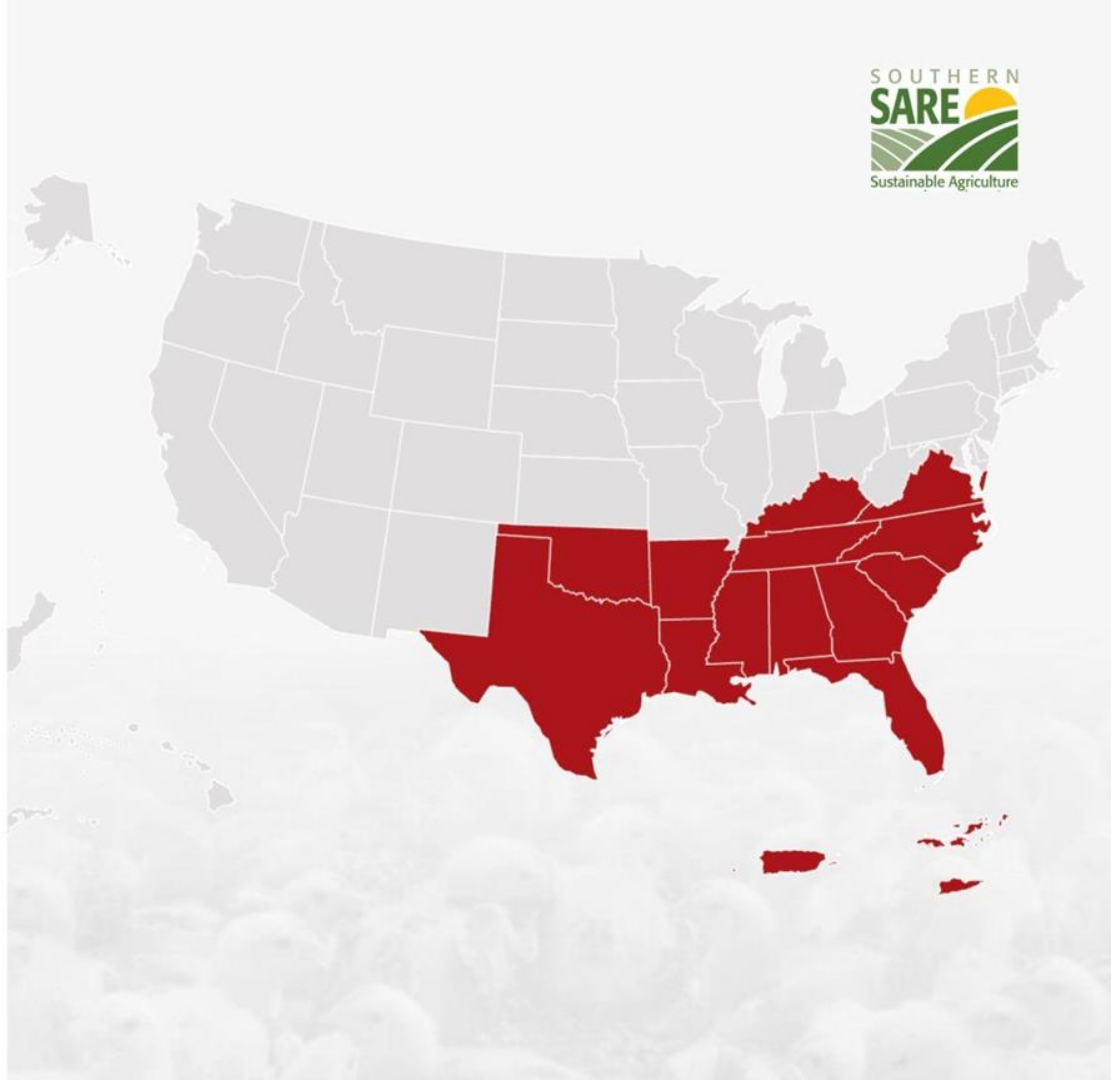
Southern SARE Research Grant Opportunities

Tierra Bartolotti | Florida SARE Program Assistant
southern.sare.org

About Southern SARE

Exploring the mission and impact of Southern SARE programs

- SARE funds innovative research to enhance sustainable farming practices across the United States. SSARE specifically funds projects located within the southern region
- The overall objective of SARE is to position agricultural communities so the most sustainable approaches available permeate U.S. agriculture.



The Three Pillars



01

Profitability

Maintain economic viability through innovative practices that improve farm income and support sustainable growth.

02

Stewardship

Enhance the quality of land, water, and air by making efficient use of resources and promoting conservation.

03

Quality of Life

Foster resilience and well-being in farming communities, ensuring a sustainable future for producers and their families.

Research & Education Grants

Funding Overview

SARE's Research & Education Grants support innovative **whole systems research** which addresses sustainable agriculture challenges.

- Private researchers are eligible to apply, along with public-institutional researchers
- SARE grants are a great opportunity to collaborate and partner with both farmers and extension agents
- Funding isn't applicable to product-testing research
- R&E take the reduction research & turn it into a whole systems project.



Why Apply for R&E Grants?



01

Significant Funding

Access substantial financial resources to address real-world farming challenges and implement innovative solutions in agriculture. Maximum \$400,000 for 1-3 year projects.

02

Build Partnerships

Collaborate with farmers, universities, and agricultural organizations to enhance research impact and share valuable insights.

03

Enhance Credibility

Strengthen your professional portfolio and credibility through involvement in meaningful research that benefits the agricultural community.

Research & Education Grants

Allowable Expenses

- Salary of lead institution personnel.
 - Hiring labor needed to effectively conduct and complete the project
 - Farmer cooperators should be appropriately compensated or a justification should be provided that explains the lack of farmer compensation.
 - Livestock/bees only if the institution/organization does not already have the animals to use for the research project. The animals become the property of the institution/organization after the project ends.
- Materials and supplies needed for the project.
 - Travel needed for the project
 - Costs of computers needed
 - Expenses related to project outreach plan
 - Refreshments at outreach events
 - Costs of sampling and sample analysis.
 - Renting equipment needed for the project.
 - Other Direct Costs



Research & Education Grants

Non-Allowable Expenses


- Starting a farm, NGO, business or other community organization, or expanding an existing farm, NGO, business or other community organization.
 - Providing any kind of financial support relative to the general operation of the farm, NGO, business or community organization.
 - Providing support of any kind for capital investments or permanent farm improvements, including: purchasing permanent greenhouses, high tunnels or other buildings; purchasing permanent irrigation, etc.
-
- Tuition
 - Breakfasts, lunches or other full meals for the project's outreach plan, or educational/resource event or program.
 - Any costs incurred for producing grant-required annual and final project reports.
 - Testing of commercial products. Products must be explored in broad generalizations.
 - Participant incentives (payment must be related to work performed on the project). Encouraging participation, fellowship or gathering as a justification does not meet the guidelines.
 - International travel.


Research & Education Grants

projects.sare.org/search-projects/

Search SARE-Funded Projects

Keyword(s): [Show all filters](#) [search tips](#)



State: Texas
Project type: Research and Education
Funded from 1988 to 2025
44 projects found.
Showing 1-25 of 44 results
1 2 [Next](#) 

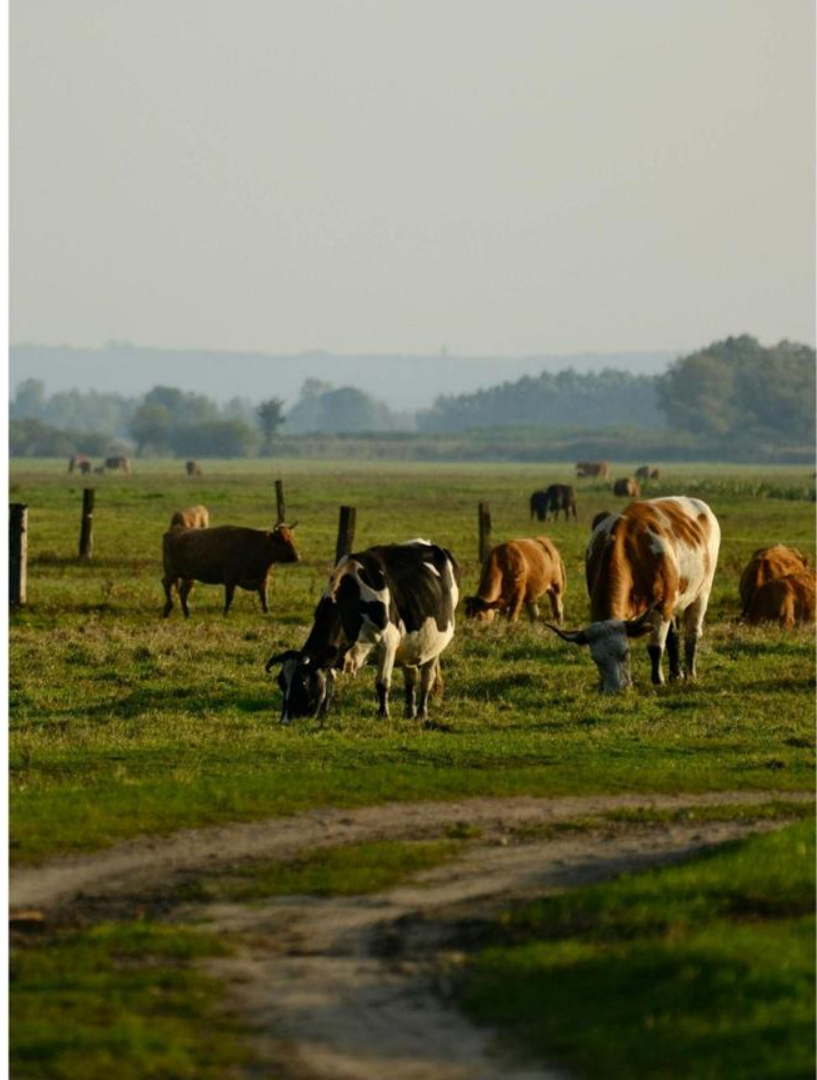
[LS25-407 - Diverse, underutilized native legume ecotypic seed for climate-smart grasslands in the southeastern USA](#)
Provide under-served farmers with the germplasm, agronomic management tools and seed-company contacts to meet a growing and specialized native grassland legume seed market for their home ecoregion that will jump-start their self-sufficiency income goals.

[LS25-410 - Towards Culturally Responsive Disaster Management for Limited Resources Producers: The Role of Person, Place and Professional Agencies II](#)
This project will seek to understand and present solutions to issues concerning culture's role in how limited resource producers prepare for, cope with and respond to disasters in the southern United States and USA territories in the Caribbean.

[LS24-399 - Fostering climate-friendly sustainable farming through integration of biochar and cover crops in Texas and Florida](#)
This project is a sustainable approach and climate-friendly agriculture system where growing cover crops and applying biochar will be used for high-value vegetable production, reduce greenhouse gas emissions, and improve soil quality

[LS22-364 - Development of Sustainable Organic Rice Ratoon Production Systems in the Southern US](#)
This proposal aims to develop best management practices for the organic rice ratoon production systems by assessing the effects of cultivars, cover crops, and organic amendments on rice yields and quality, pest pressures, environmental sustainability, and economic viability.

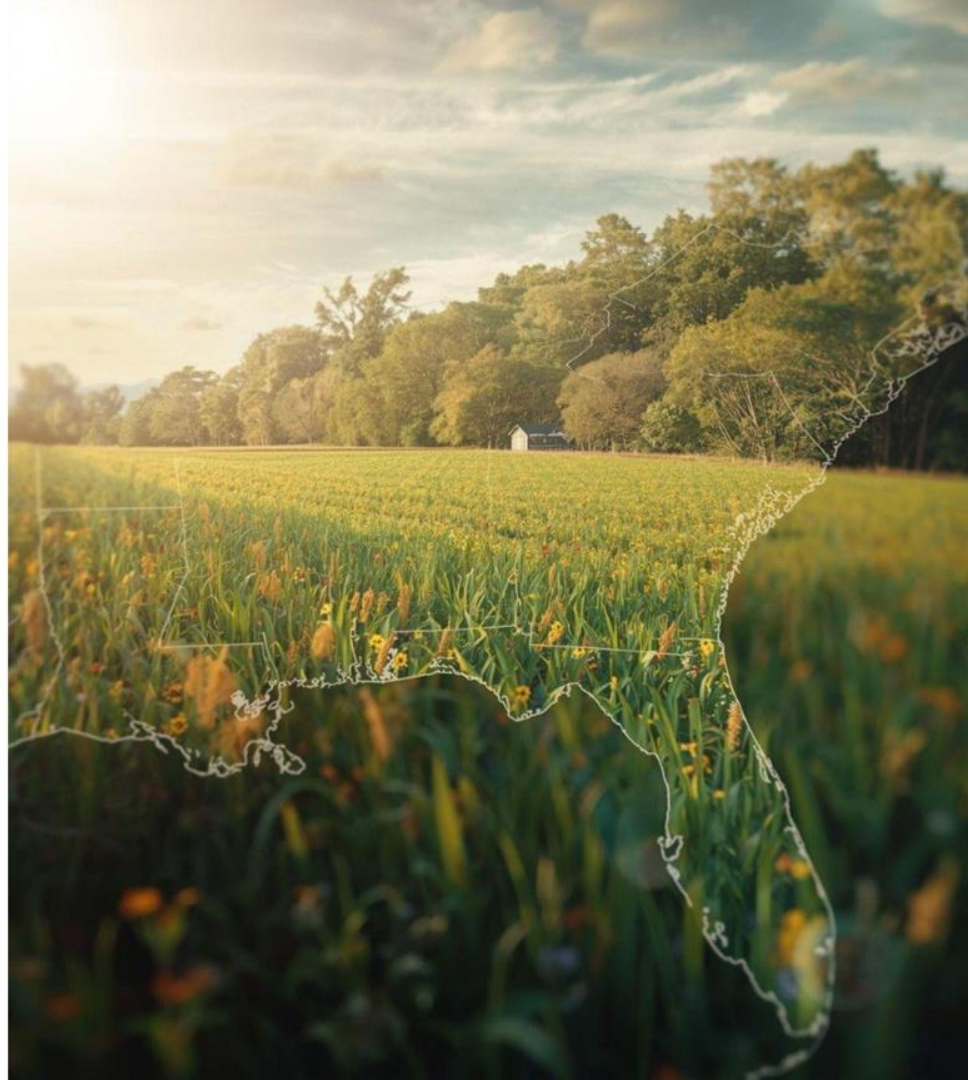
[LS22-371 - Evaluating Cover Crops for Weed Reduction throughout the Southern States](#)
Through coordinated on-farm trials, this project will study weed suppression by cover crops through allelopathy and other mechanisms. We will engage limited-resource farmers, encourage them to try cover cropping, and summarize findings in a user-friendly guide to managing weeds with cover crops.



On-Farm Research Grants

Accessible funding opportunities for new researchers and farmers alike

- On-Farm Research Grants serve as a stepping stone for new researchers to engage in practical, sustainable agriculture.
- Maximums are \$30,000 for two-year projects. On-farm research grant funds are paid by reimbursement of allowable project expenses.



Common Proposal Pitfalls



01

Mission Misalignment

Proposals often fail when they don't align with SARE's sustainable agriculture mission or three key pillars (stewardship, profitability, quality of life)

02

Lack of Innovation

Submissions that cover previously researched topics without new contributions are less likely to receive funding approval.

03

Weak Methods

Proposals with unclear or poorly designed research methodologies create uncertainty about project feasibility and effectiveness.

Keys to Writing Proposals



01

Follow Instructions

Ensure you read and follow the Call for Proposals requirements carefully; every detail matters.

02

Build Partnerships

Include collaborations with farmers, universities, or agricultural organizations to enhance project impact and credibility.

03

Comprehensive Outreach

Develop a detailed plan for sharing results with target audiences to maximize the project's reach and benefits.

SARE Resources Overview

What are you looking for?



[Can't Find It?](#) [Filters](#)

Browse By Topic



Commodities



Crop Production



Farm Business Management



Animal Production



Pest Management



Production Systems



Sustainable Communities



Education and Training

01

Resource Library

Comprehensive collection of free publications on sustainable agriculture topics, research findings, and farmer success stories.

02

Print Materials

Over 100 publications available in print format for workshops, conferences, and farmer meetings to enhance outreach.

03

USB Drive Libraries

Convenient bundles of USB drives containing complete SARE resource collections, making information access easy and portable.

Next Steps to Apply



01

Explore Grant Opportunities

Visit southern.sare.org to discover current grants and detailed application guidelines specific to your project.

02

Review Application Guidelines

Carefully read the Call for Proposals to understand requirements and ensure alignment with funding objectives.

03

Contact SARE Staff

Discuss your project idea with Southern SARE staff for personalized guidance and insights before submitting your application.

Contact Us

 (770) 412-4787

 www.southern.sare.org

 ssare@uga.edu



UNIVERSITY OF
GEORGIA





Thank You

www.southern.sare.org