

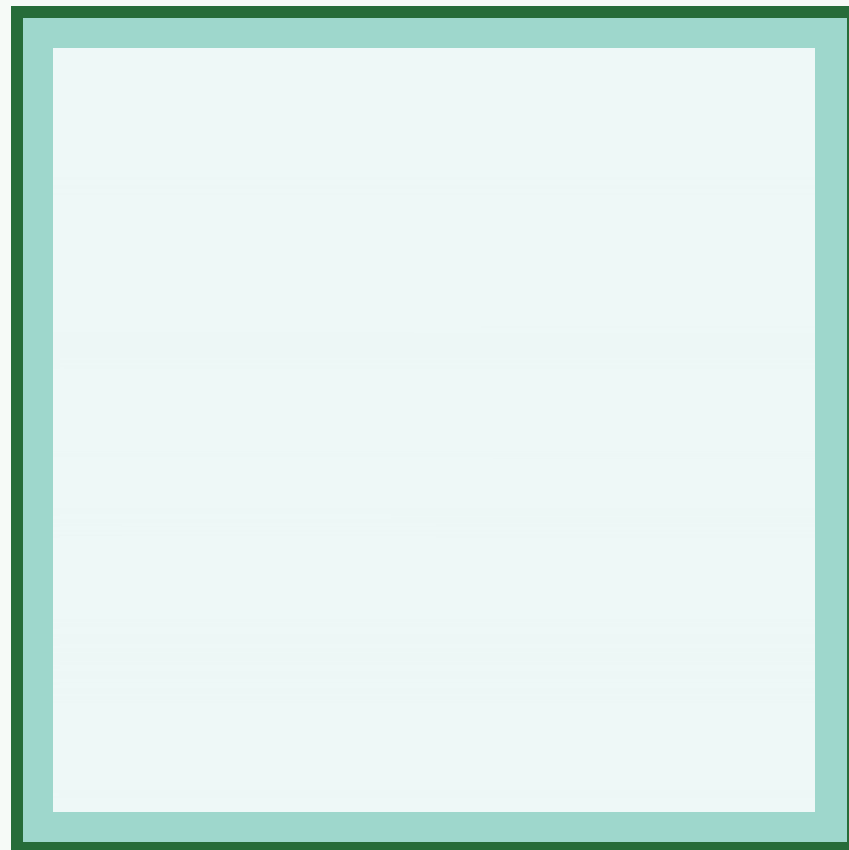
BEAN BINOCULARS

BETTER TOGETHER INITIATIVE

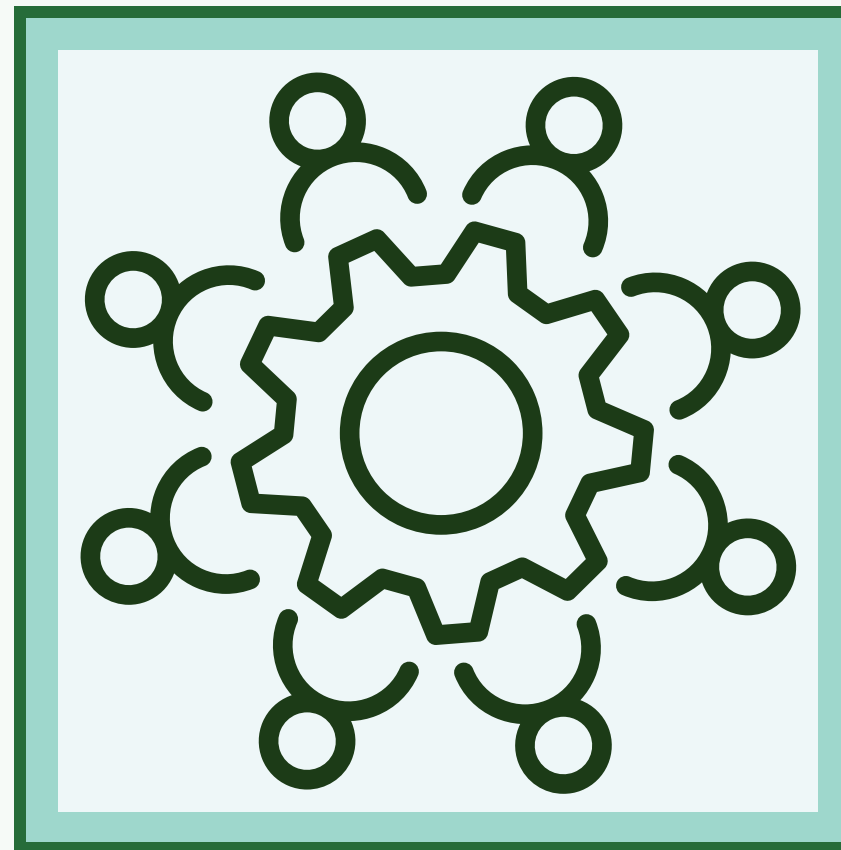
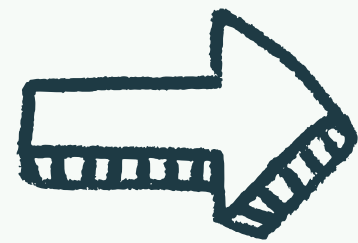
Haleigh Ortmeier-Clarke, Ph.D.



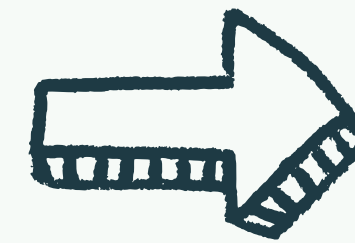
WHAT IS BETTER TOGETHER?



Evaluate the Existing Outreach Landscape



Expand Collaboration & Amplify Efforts



Increase Reach & Benefit to Farmers



WHAT IS BEAN BINOCULARS?

Interactive map of production issues

Submissions from Ext. Specialists

Entries uploaded as they arise

Entries Include:

- Photos of Issue
- Description of Issue
- Additional Env. Context
- Research-Based Management Recommendations
- Contributor Information



The screenshot shows the website for Bean Binoculars, a product of the Crop Protection Network. The header includes the logo and navigation links: Submit Content, Contact, Login, and social media icons for X, Instagram, YouTube, LinkedIn, and Facebook. Below the header is a green banner with the title "Bean Binoculars" and a background image of a soybean field. The main content area features the "National Soybean Alerts" section, which includes the Bean Binoculars logo and a description: "The Bean Binoculars interactive map displays soybean production issues from across the country as they arise throughout the growing season. This map is updated regularly by extension specialists in each state and visualizes the status of various soybean production issues as they occur." Below this is a filter section with the text "Select an incident on the map to display more information and related management options." and "Issue Type Filters: Abiotic Factor Herbicide Injury Insects, Mites, and Slugs Other Pathogen" followed by a green "Filter" button. At the bottom of the screen, there is a QR code and the URL go.ncsu.edu/beanbinoculars.

WHAT IS BEAN BINOCULARS?

Entries stay on map for 2 months

All entries stored in the Archive

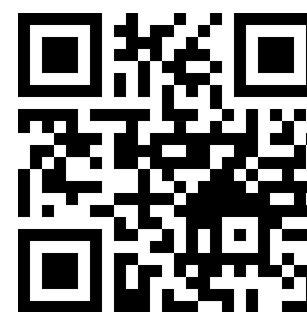
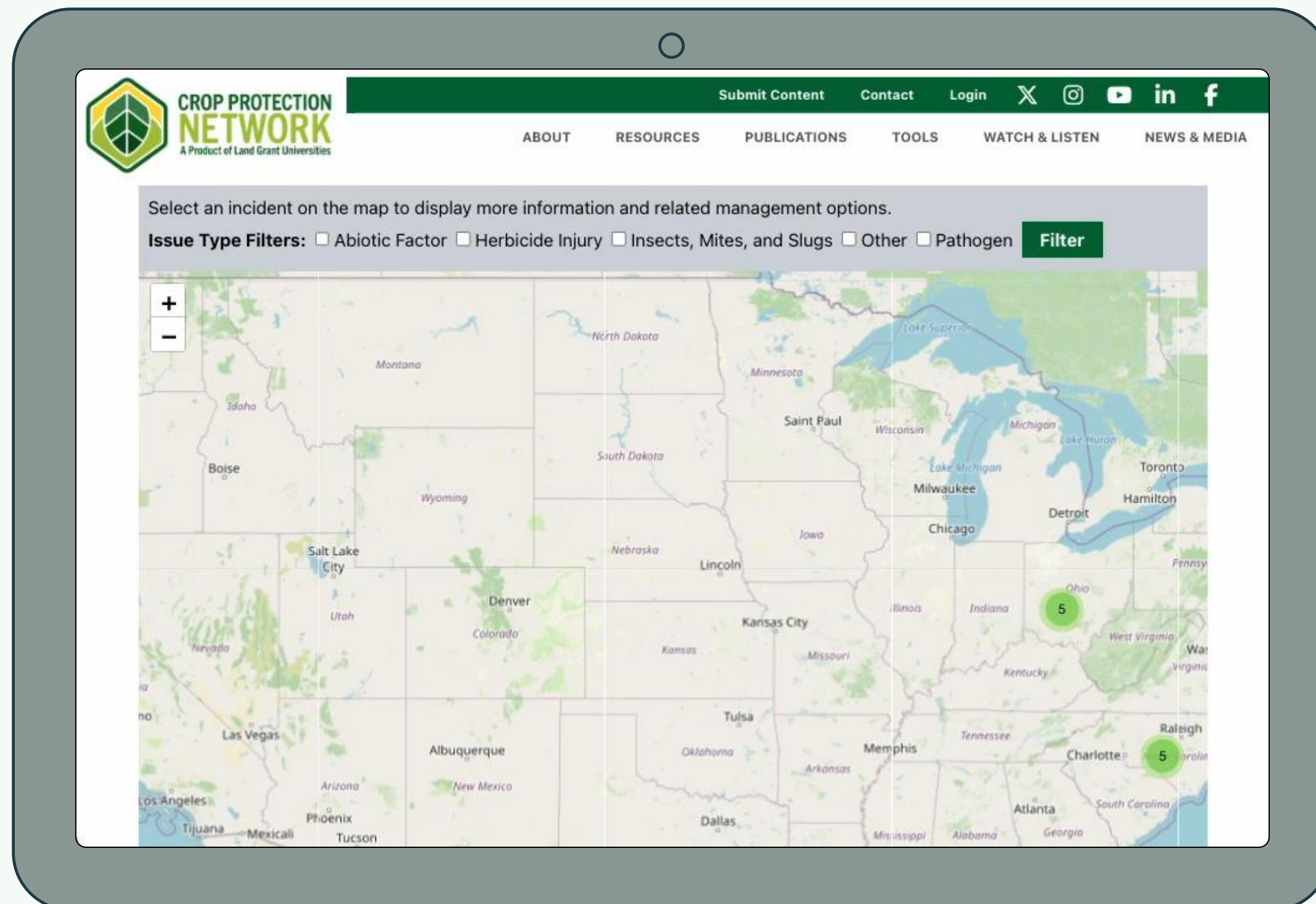
Training Tool/Historical Data

Filter Options:

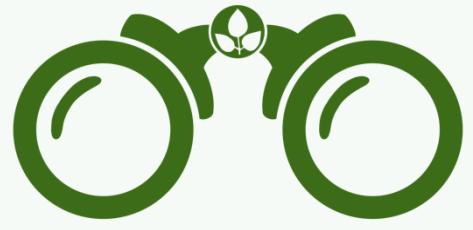
Issue Type

Date Range (Archive)

State (Archive)



go.ncsu.edu/beanbinoculars



2023

Planning for Bean Binoculars began



2024

Bean Binoculars launched in July



**70+ entries
10+ states**

2025

Develop contributor pool, streamline entry submissions



2026+

Expansion?



CONTACT US

BETTER TOGETHER BOOTH #103

FUNDED BY THE UNITED SOYBEAN BOARD

Haleigh Ortmeier-Clarke, Ph.D.

Program Manager

ortmeierclarke@ncsu.edu

Bean Binoculars
Website



Bean Binoculars

Better Together
Information

