

A landscape of rolling green hills under a sunset sky, with a white rectangular box containing text.

APPLYING ENLIST ONE
UNDER ESA MITIGATIONS

Brookings County, South
Dakota Real-World Compliance
Example

SCENARIO OVERVIEW

LOCATION: BROOKINGS COUNTY, SOUTH DAKOTA

- **CROP: SOYBEANS**
- **PRODUCT: ENLIST ONE HERBICIDE**
- **TIMING: JUNE POST APPLICATION**
- **EQUIPMENT: GROUND SPRAYER**

**STEP 1: CHECK
BULLETINS LIVE! TWO**

Farmer must enter:

- **Field location**
- **Application month**
- **Enlist One EPA Reg. No.**
- **Confirm PULA status**

Example Outcome:

- **Brookings County not in a PULA**
- **No species-specific prohibitions**
- **Standard mitigations apply**

Bulletins Live! Two -- View the Bulletins

For assistance in using Bulletins Live! Two, [view the tutorial](#). Also see [background notes](#) and a [quick start guide for BLT](#).

Directions

This tool displays Pesticide Use Limitation Areas (PULAs) for products with active Endangered Species Protection Bulletins. To generate a printable bulletin, please follow these steps:

1. Navigate to your intended pesticide application area by using the "Location Search" tool or panning and zooming on the map itself.
2. Select your Application Month from the Application Date dropdown.
3. Search specific pesticide product(s) by entering the EPA product registration

Unpin

Location Search:

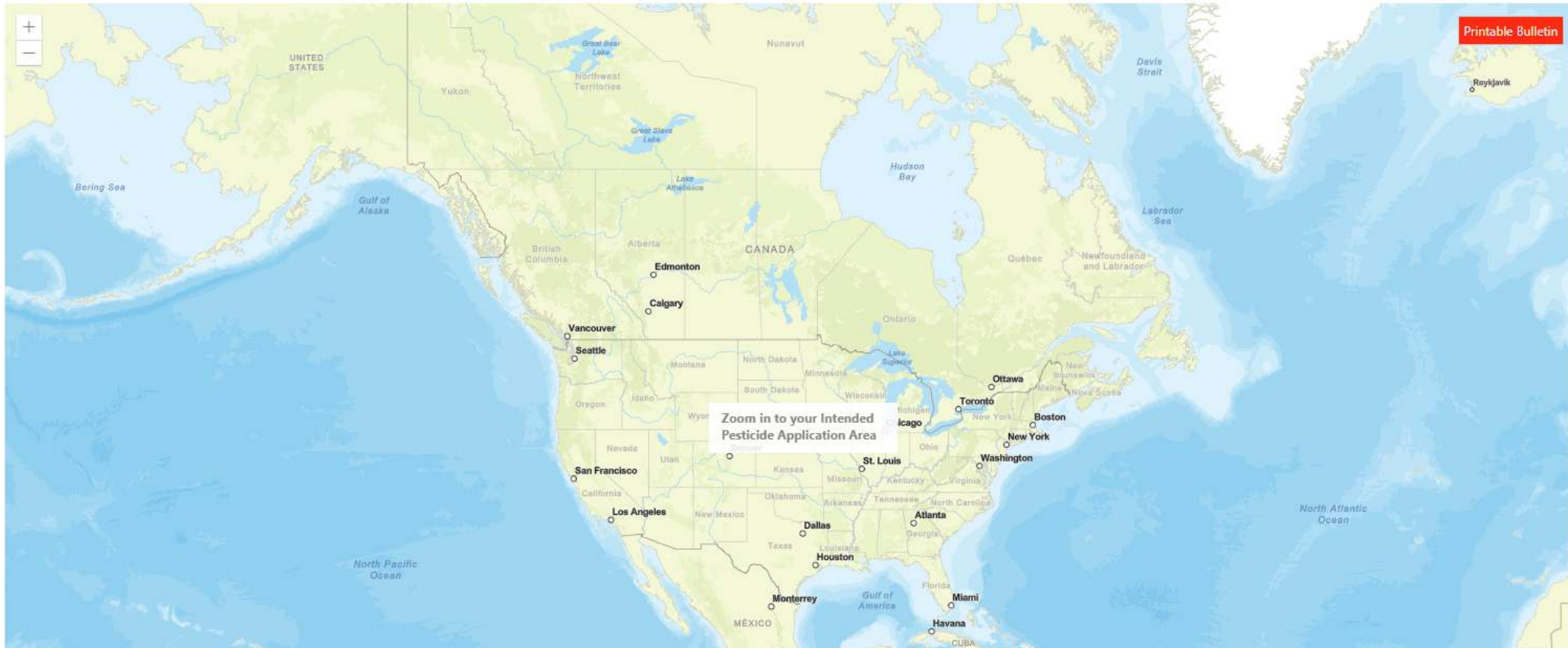
Find Place

Application Month:

January 2026 ▾

EPA Registration Number:

X



Endangered Species Protection Bulletin



Application Month: June 2026

Product: GF-3335 (62719-695)

- 1 Areas where pesticide use must be limited are identified on the map. A legend is located beside the map to help pinpoint these locations.



Legend
Limitation Area

Currently, no pesticide use limitations exist within the printed map view for the month/year and product you selected, beyond the instructions specified on the pesticide label. Follow the use instructions on your label.

Ensure that your pesticide application area is within the printed map view. If it is not, follow the directions on the Instructions Tab to ensure that your pesticide application area is captured within the printed map view.

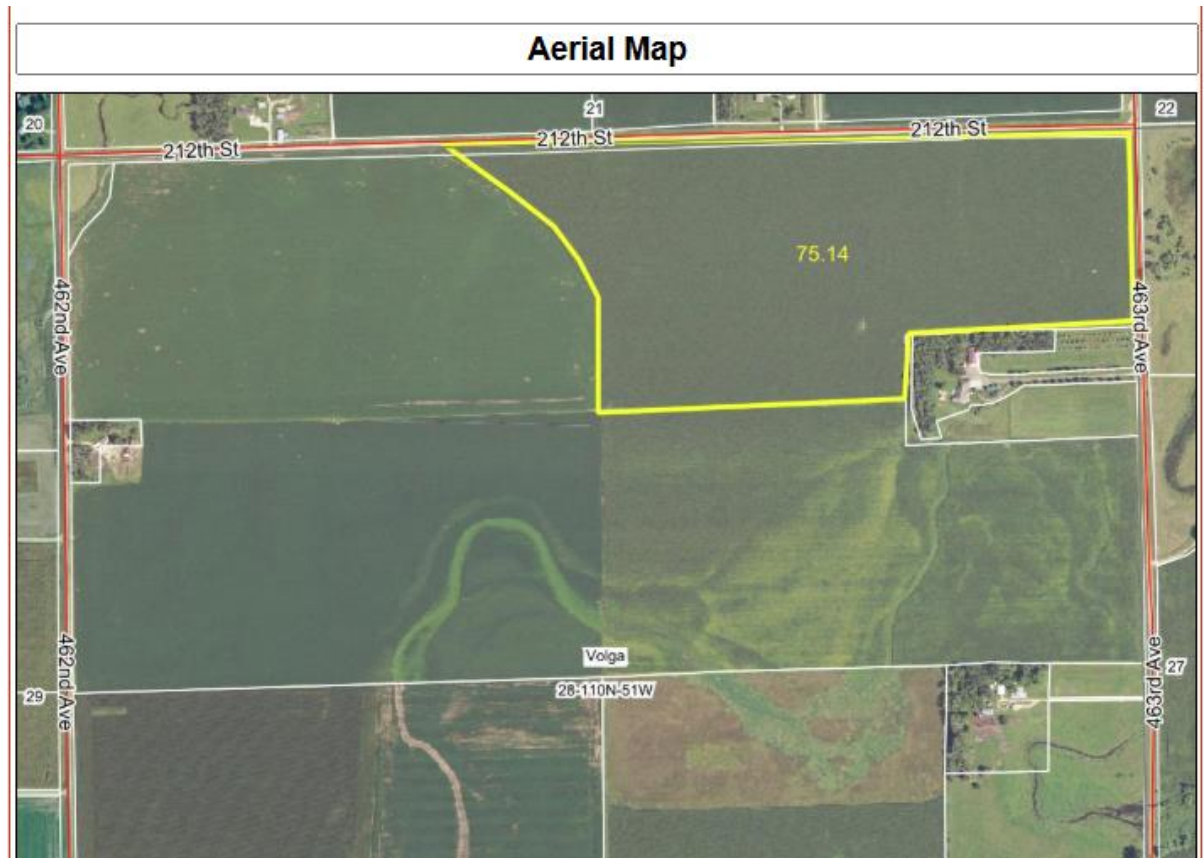
Please check back if you plan to apply your pesticide in an area outside the map view or in a month and year other than the one for which this Bulletin is valid.

NO PULA EXISTS FOR
FIELD AREA

STEP 2: SPRAY DRIFT MITIGATIONS

- Enlist One Requires:
- Downwind buffer (typically 30 ft for 2,4-D choline; check label)
- Drift-reducing nozzles
- Proper boom height (<24")
- Avoiding temperature inversions
- Managed areas (ditches, mowed grass) may count toward buffer
- Example:
 - Wind from west at 5 mph
 - Mowed ditch on north and east side counts toward buffer

SPRAY DRIFT MITIGATION



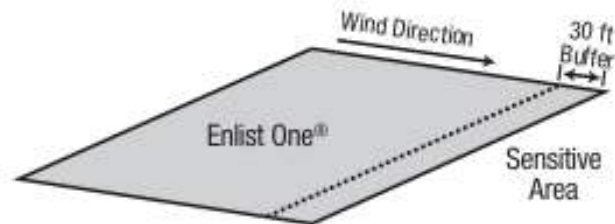


STEP 3: RUNOFF MITIGATIONS EPA HERBICIDE STRATEGY REQUIRES:

- Vegetative filter strips
- Avoiding applications 48 hours before heavy rain or irrigation
- Reduced risk on low slopes
- Maintaining residue cover
- Plant cover crop post-harvest

ENLIST ONE

Protection of Sensitive Areas



Applicator must maintain a 30-foot downwind buffer (in the direction in which the wind is blowing) from any area except:

1. Roads, paved or gravel surfaces.
2. Planted agricultural fields. (Except those crops listed in the "Susceptible Plants" section.)
3. Agricultural fields that have been prepared for planting.
4. Areas covered by the footprint of a building, shade house, silo, feed crib, or other man-made structure with walls and/or a roof.

To maintain the required downwind buffer zone:

- Measure wind direction prior to the start of any swath that is within 30 feet of a sensitive area.
- No application swath can be initiated in, or into an area that is within 30 feet of a sensitive area if the wind direction is towards the sensitive area.

State and Local Requirements

Applicators must follow all state and local pesticide drift requirements regarding application of 2,4-D herbicides. Where states have more stringent regulations, they must be observed.

Management of Runoff

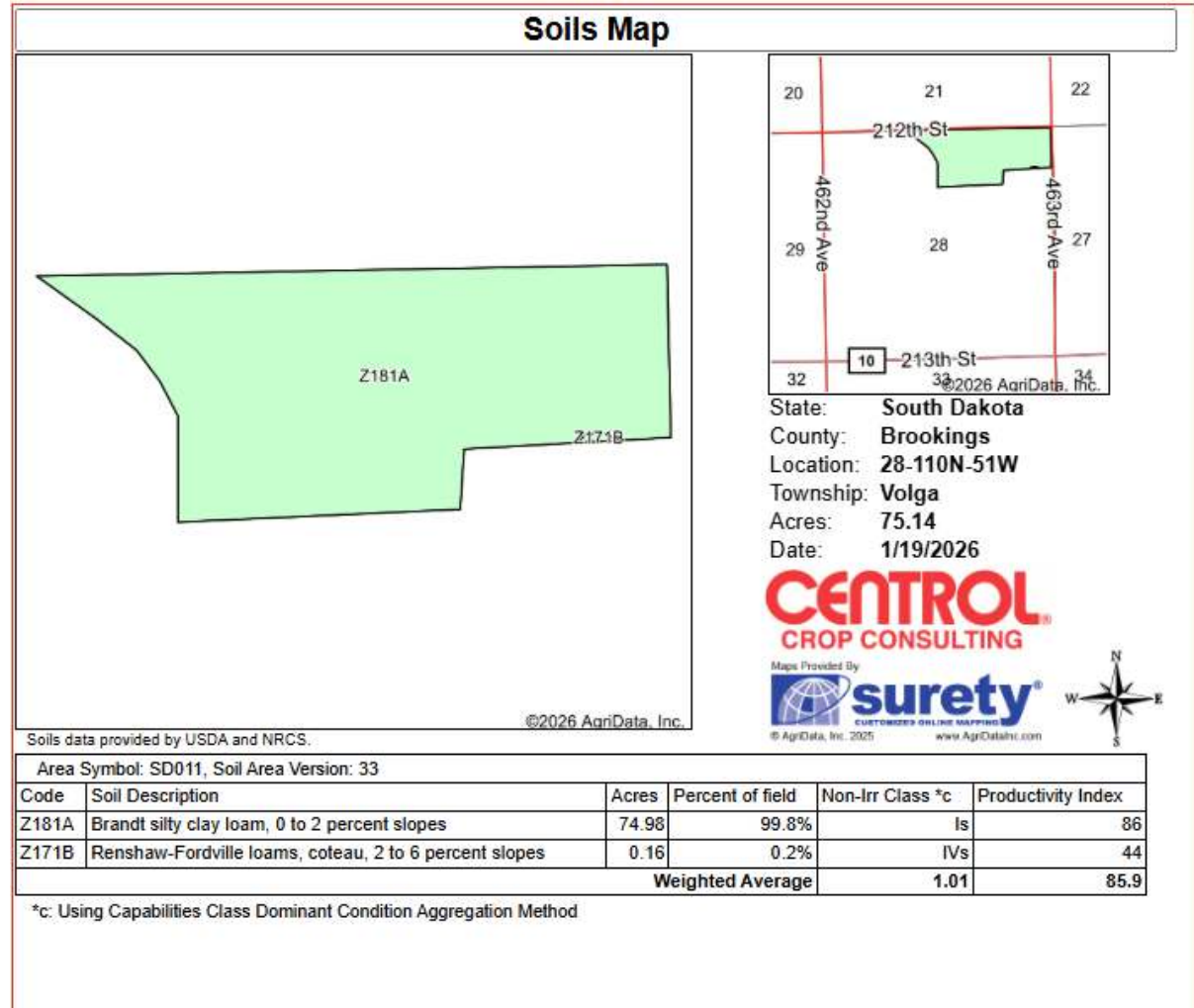
A variety of factors including soil type, slope, and weather conditions (e.g., rainfall) can influence volume and intensity of water running off the treated field. The applicator must evaluate all factors and make appropriate adjustments when applying this product. Land management, field condition and application practices that reduce, to the maximum extent practicable, runoff from treated fields, must be implemented by land managers/users of this product.

To reduce the potential for runoff and avoid off field impact from treated fields to maximum extent practicable, applicator must plan/schedule applications to maximize time between an application of this product and anticipated rainfall (or planned irrigation). Application must take place no less than 48 hours prior to irrigation or predicted rainfall (by NOAA/ National Weather Service, or other similar forecasting service).

For land with **Hydrologic Soil Groups* A & B**: The land manager/ applicator must effectively implement measures in the following tables to equal a **minimum of 4 credits**.

For land with **Hydrologic Soil Groups* C & D**: The land manager/ applicator must effectively implement the measures in the following tables to equal a **minimum of 6 credits**.

SOIL TYPES



MITIGATION MEASURES

Mitigation Measures			Credits
Reduce number of applications - Reduced number of applications of Enlist products per year. Applications may be made at any time during crop development but must maintain a minimum 12-day retreatment interval.		3 applications	0
		2 applications	2
		1 application	4
Residue Tillage Management: no-till, strip-till, ridge-till, and mulch-till			4
Vegetative Filter Strips	30 ft off-field vegetative buffer on down slope	HSG A or B	2
		HSG C or D	0
	100 ft off-field vegetative buffer on down slope	HSG A or B	4
		HSG C or D	1
Field border: border with dense vegetative stands with a minimum width of 30 ft.			2
Cover Crop			2
Vegetative Barrier: Permanent strips of dense vegetation along the contours of the field with a minimum width of 3 ft.			2
Contour Buffer Strips or Terrace			2
Grassed Waterway			2
Water and Sediment Basin			1
Contour Farming or Contour Strip Cropping			1

*Hydrologic Soil Group (HSG) definitions: A = Sand, loamy sand, or sandy loam; B = Sandy clay loam; C = Silt loam or loam; D = Clay loam, silty clay loam, sandy clay, silty clay or clay.



STEP 4: LOCAL RESTRICTIONS

- Brookings County has **no additional pesticide restrictions**
- Enlist One allowed with ESA mitigations

STEP 5:
REQUIRED
DOCUMENTATIO
N

- Farmer must record:
 1. Bulletins Live! Two confirmation
 2. Drift mitigation steps
 3. Runoff mitigation steps
 4. Weather conditions
 5. Application details

**Documentation is mandatory under the
ESA-compliant label!!!**



FINAL OUTCOME

- **Enlist One can be applied in Brookings County**
- **No PULA restrictions**
- **Standard ESA mitigations required**
- **Compliance achieved through planning**
- **Documentation protects the applicator**

KEY TAKEAWAYS



ESA mitigations now apply to many herbicides, including Enlist One

- Bulletins Live! Two is the starting point every time
- Drift and runoff protections are mandatory

- Enlist One's buffer + nozzle requirements must be followed
- Compliance is achievable with proper planning

THANK YOU

Matt Eich

Control Crop Consulting

605-690-8748

meich@control.com

