



**CROP PROTECTION  
NETWORK**

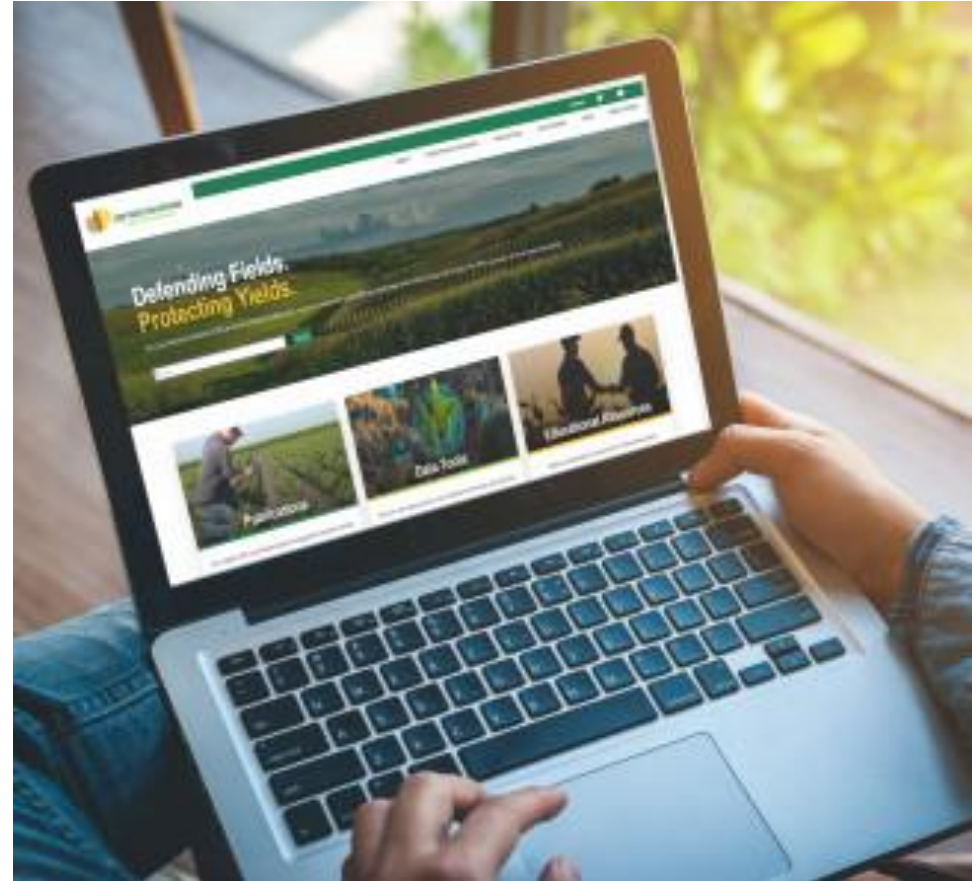
A Product of Land Grant Universities

**Kiersten Wise, University of Kentucky**  
**Daren Mueller, Iowa State University**  
**Albert Tenuta, OMAFRA**



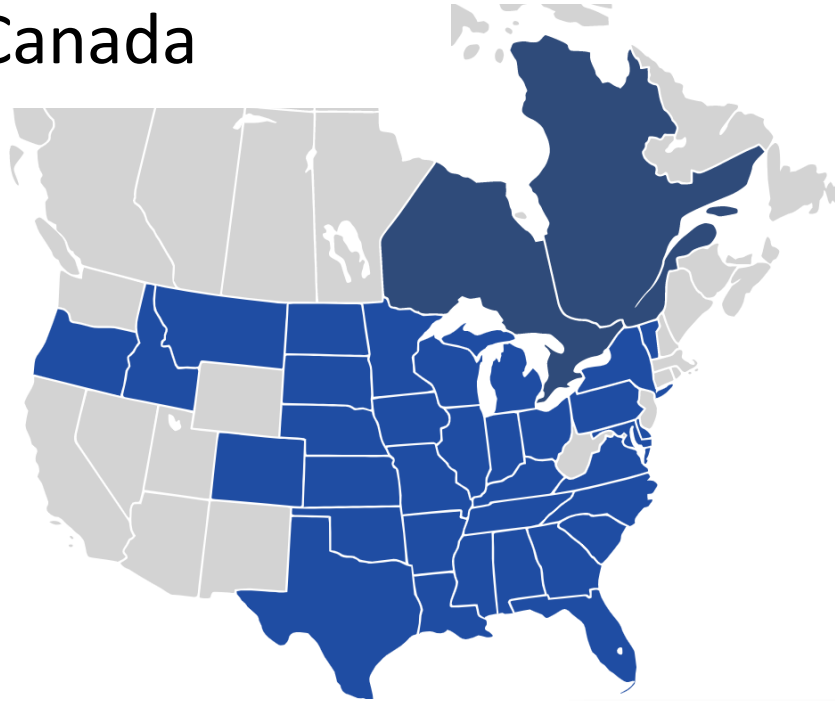
# What is the Crop Protection Network?

- Multi-state and international partnership of university and provincial Extension specialists, and public and private professionals that provides unbiased, research-based information.
- Infrastructure for collaborative multi-state outputs among universities, Extension specialists, and public/private professionals.
- Audience: farmers, agribusiness personnel, crop consultants, extension agents, researchers, etc.
- Flexible and responsive to new research findings, innovation and changing agricultural practices.



# Contributors and Funders

Input from **215** specialists  
from **34** U.S. states, Ontario,  
and Quebec, Canada



U.S. Wheat & Barley  
Scab Initiative



United States Department of Agriculture  
National Institute of Food and Agriculture

[CropProtectionNetwork.org](http://CropProtectionNetwork.org)

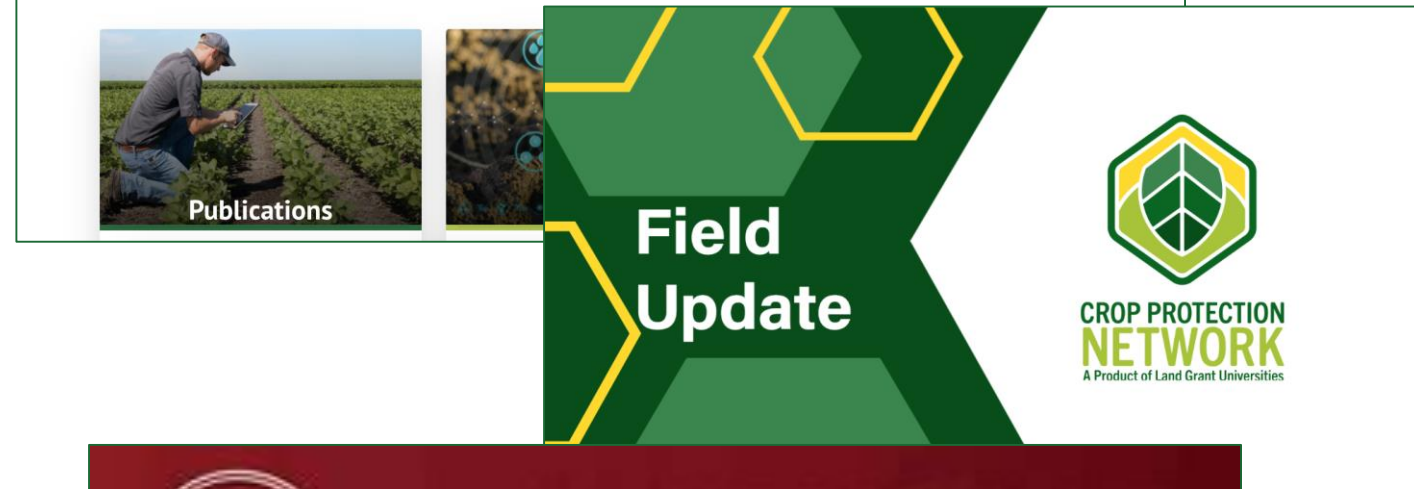
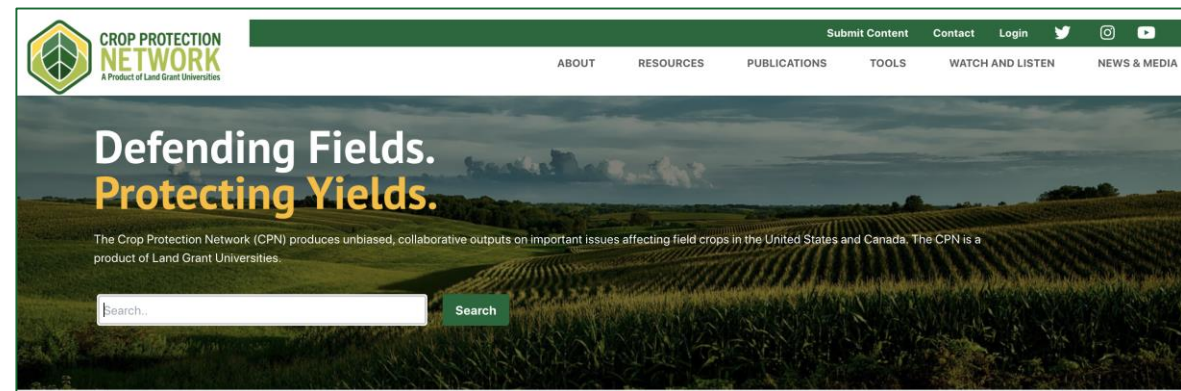


**Defending Fields. Protecting Yields.**



# CPN Outputs

- Web page
- Publications
  - Extension publications (97)
  - Encyclopedia articles (225)
  - Web books (5)
  - Fungicide efficacy guides (5)
- Videos
  - CPN TV (release each January)
  - Crop Scout School (release each April)
  - Field updates (release during season)
- Audio
  - I See Dead Plants podcast
  - Support other IPM-related podcasts



# CPN Outputs

- Tools
  - CCA CEUs (10,000 CCA CEUs awarded from quizzes taken over CPN content!)
  - Maps
  - Yield loss calculator
  - Disease severity/insect defoliation
- Outreach
  - Booths/talks at meetings
  - X (Twitter)
  - Instagram Picture of the Day

## Crop Scouting Basics for Corn and Soybean Ch. 2: Know Your Field

Examination

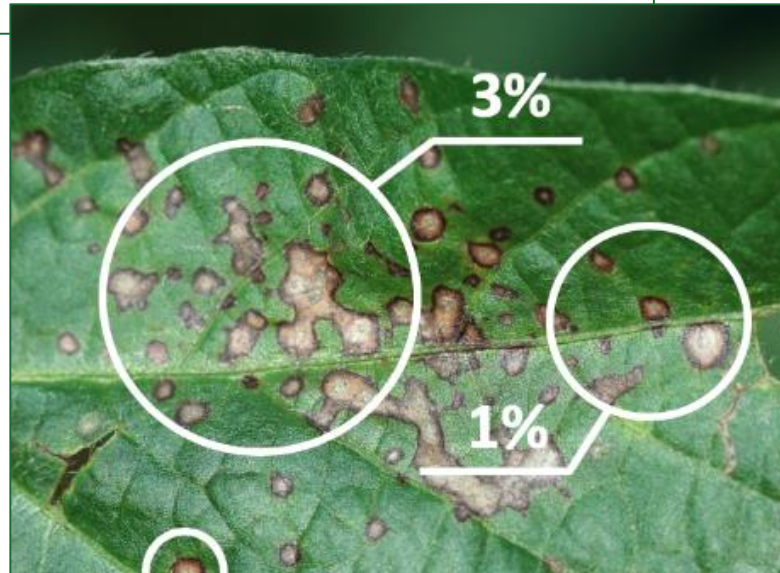
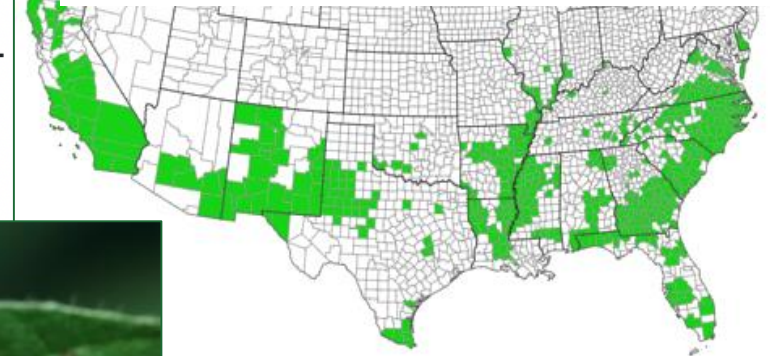
4/10

Beginning bloom (R1) in soybean occurs when \_\_\_\_\_.

- Less than 5 percent of flowers have shed pollen.
- At least four flowers are present on top leaf axils.
- One flower is open at any node.
- Up to 25 percent of flowers have shed pollen.

Submit Answer

### Distribution of Southern Root-Knot Nematode



### Disease Severity and Insect Defoliation Training

Train here before hitting the field to ensure accurate severity assessment.





# Yield Loss Calculator

## Corn Disease Loss Calculator

Calculate yield and economic losses due to corn diseases

- Corn, soybean, wheat, cotton
- Diseases and insects
- Interactive
- Searchable by:
  - Time - year(s)
  - Disease
  - Insect
  - Geographic area
    - Region
    - State
    - Country

### Results

