

NAICC 2011 ANNUAL MEETING

Tim Moline
Control Crop Consulting
Marshall, MN

The logo for CENTROL, a crop consulting cooperative. The word "CENTROL" is written in a large, bold, red, sans-serif font. Below it, the tagline "A CROP CONSULTING COOPERATIVE" is written in a smaller, red, sans-serif font. The logo is set against a white rectangular background that is centered on a banner with a green and yellow gradient.

CENTROL[®]
A CROP CONSULTING COOPERATIVE

CENTROL OF MARSHALL MN

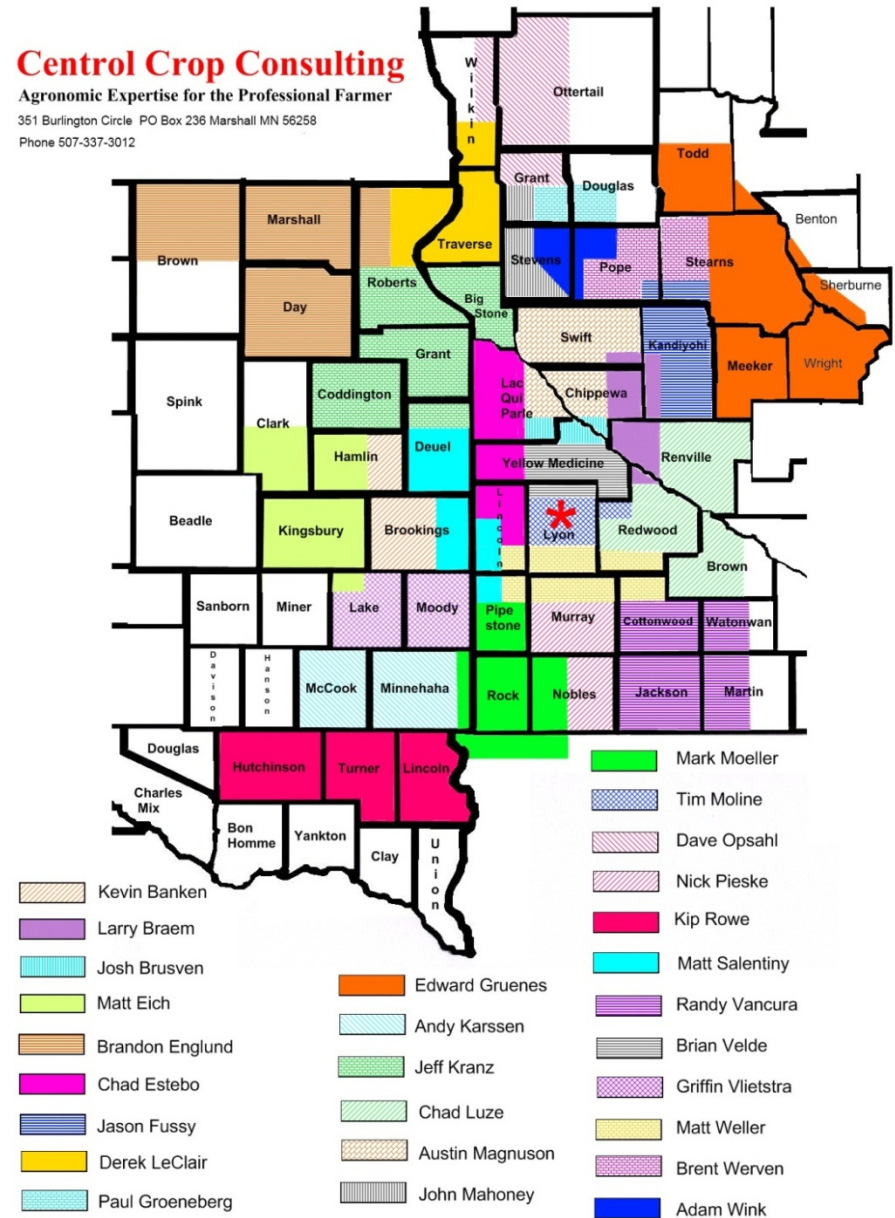
- ▶ 11th Year with Centrol
- ▶ Precision Ag Manager & Consultant
- ▶ Involved in Precision from beginning
- ▶ Staff
 - ▶ 28 Consultants
 - ▶ 2 Office Staff

Centrol Crop Consulting

Agronomic Expertise for the Professional Farmer

351 Burlington Circle PO Box 236 Marshall MN 56258

Phone 507-337-3012

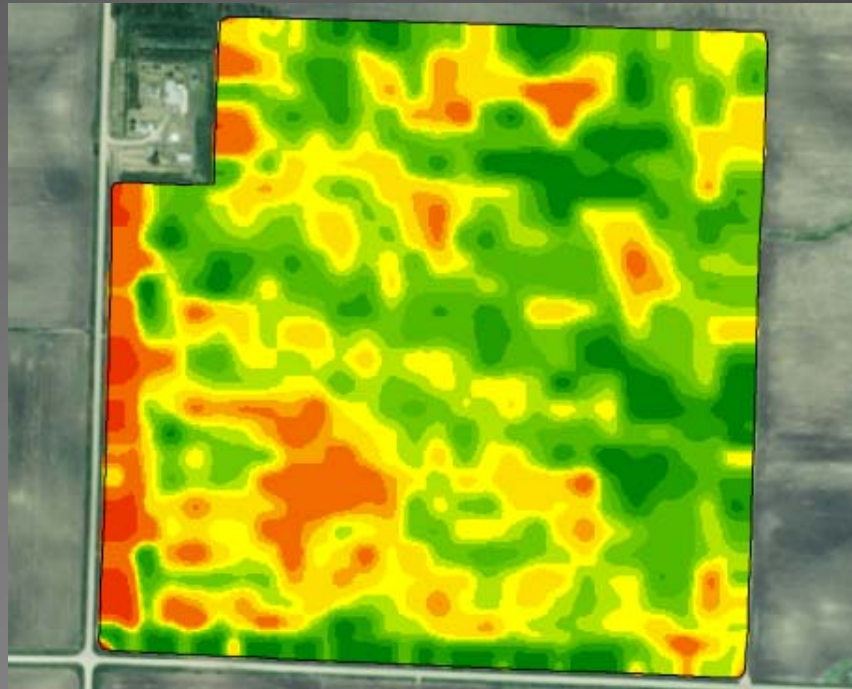


SESSION I- PRECISION AG TOOLBOX

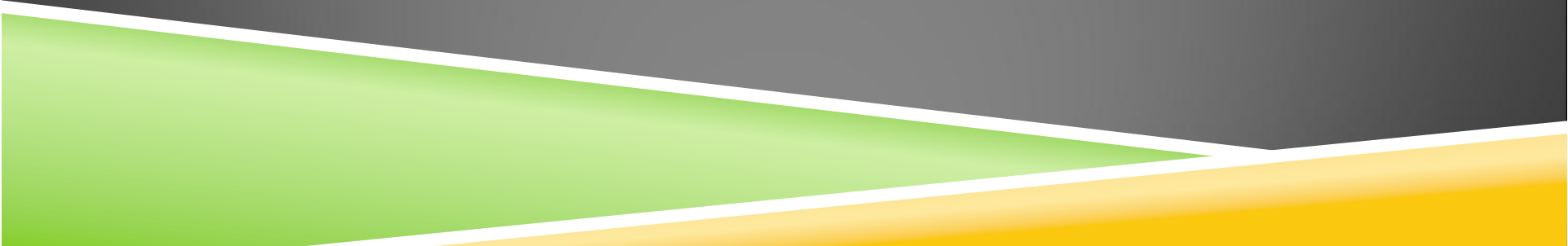
- ▶ Basic Tools used in our business
 - ▶ What
 - ▶ When
 - ▶ Where
 - ▶ Why
 - ▶ How

TOOLS DISCUSSED

- ▶ Yield Data
- ▶ Imagery
- ▶ Soil Surveys
- ▶ Soil EC (Veris)



TOOLS

- ▶ Which tools are used
 - ▶ PROS vs. CONS of the tools in the system
 - ▶ Implementing the Tools
 - ▶ Comparison of Tools
 - ▶ Data Management
- 

SESSION 2- INTERPRETATIONS

- ▶ Management Concepts
 - ▶ Implementing an Input Management Program
 - ▶ How long does it take to spend 1 Million \$
 - ▶ Real Farm Success Stories
 - ▶ Returns on Investment – What Can the Grower Expect

Session I

- ▶ Base Map Construction
- ▶ Precision Ag Toolbox

▶ 8:35-9:15am

Session II

- ▶ Zone Map Interpretations
- ▶ Implementing a Zone Program

▶ 9:20-10:00am